

# HKS811B

## Intense Pulse Light User&Training Manual



---

## **Intense Pulse Light Safety Guidelines**

---

The Following information is provided for the correct utilization of IPL Skin treatment system. The information includes not only the accident protection regulations the products comply with, but also the effective regarding proper use of the products.

1) Electric safety regulation

The EMC Directive 89/336/EEC amended by 92/31/EC & 93/68/EEC EN 55015:2000+A1+A2/LUM200704025/EMC EN 61000-3-2:2000+A2/LUM200704025/EMC EN 61000-3-3:1995+A1+A2/LUM200704025/EMC EN 61547:1997+A1/LUM200704025/EMC

2) Material ROHS test 2002/95/EC

Restriction of use of certain Hazardous

Substance in Electrical & electronics Equipment/ROHS.

3) Electromagnetic radiation safety regulation LVD/EN 60601-1:2006/AGC10430904GZ05E3EMC/EN 60601-1-2:2001+A1:2006/AGC10430904GZ05E1

4) ISO 13485:2003 MEDICAL/33021200005459

5) ITC MEDICAL CE

IPL SKIN TREATMENT SYSTEM belongs to II a according to MDD directive, It designed according to EN 980:2003; EN 1041:1998; EN ISO 14971:2007; EN 60601-1-2:2007; EN 61000-3-2:2006; EN 61000-3-3:1995+A1:2001+A2:2006; EN 60601-2-22:1996; EN 60601-1-4-1996+A1-1999; EN 60601-1:2006.

# HKS811B

## Intense Pulse Light

### User & Training Manual

## Certificate



# HKS811B

Intense Pulse Light  
User & Training Manual

---

## Question

---

Why is IPL better than other treatments?

In addition to treating multiple symptoms and locations in each session, IPL is gentle, non-invasive and safe. Because of this, there is no "down time." You see results in the complexion and the skin texture of the entire face. You can return to your normal routines and activities immediately. In fact, many people even schedule their sessions during their lunch break. Additionally, IPL treatments are customized to your specific skin type and color, providing the best possible results.

What areas can be treated with IPL systems?

The IPL System can remove hair from all parts of the body including the face, legs, arms, underarms, and back. It can also treat sensitive areas like the chest, nipples and bikini line.

What do IPL treatments feel like?

As the name implies, the IPL hand-piece cools and soothes as it glides along your skin. When the pulse of light is delivered, some patients experience a mild pinching or stinging sensation. No local anesthesia or pain medication is typically required, however some patients may prefer to use a topical anesthetic when sensitive areas are treated.

How many treatments will I need?

Most areas require 3-6 treatments, but the number of IPL treatments you may require for optimal long-term benefits depends on various factors such as your hair thickness, the area treated, and your hair growth

---

## Question

---

cycle. Interestingly, not all hairs are actively growing at the same time, but actually go through three distinct phases; growth, regression, and resting. IPL systems work by disabling the hair that is principally in the active growth phase at the time of treatment. Since other hairs will enter this active growth phase at different times, additional treatments may be necessary to disable all of the hair follicles in a given area.

How is IPL used to treat benign vascular lesions? Aging, sun exposure and other factors can cause the appearance of broken capillaries and blood vessels on the face known as telangiectasias, which appear as spider veins. Sometimes broken capillaries can cause a diffused redness in the skin, called erythema, a source of social embarrassment for many people. Rosacea is a common skin condition that is characterized by diffused erythema. All of these conditions

# HKS811B

Intense Pulse Light  
User&Training Manual

---

## 1.Product Information

---

### 1.PRODUCT INFORMATION

#### APPLICATION

- \*Hair removal
- \*Skin rejuvenation
- \*red face, red nose, couperosis, spiderveins.
- \*age spots, sun spots, pigmentation troubles
- \*Acne



#### FEATURES

- \*1handle
- Big handle:15\*50mm with 5filter
- 640-1200nm for hair removal
- 590-1200nm for red face, red nose, couperosis, spiderveins.
- 560-1200nm for Skin rejuvenation
- 430-1200nm for Acne **optional**
- 480-1200nm for age spots, sun spots, pigmentation troubles **optional**
- 750-1200nm for hair removal in DarkSkin **optional**
- \*Lamp longevity:60000shots
- \*Energy:15-50J
- \*Pulse Number:1-15adjust
- \*Pulse Width:1.0-20.0
- \*Pulse Delay:1-50
- \*Shot period:2-5second adjust
- \*Display:8.0 inch Touch display
- \*Voltage:110V or 220V
- \*Power:1000W
- \*Cooling system:Wind+water+semiconductor
- \*Certifications:CE/ROHS
- \*Pakcge size:66\*66\*110cm
- \*Weight:56kg
- \*Free part:laser glasses,funnel

# HKS811B

Intense Pulse Light  
User&Training Manual

## 2.Installation Alignment and operation procedures

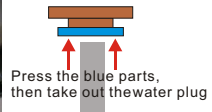
2.1 Open the Package and checking all parts.



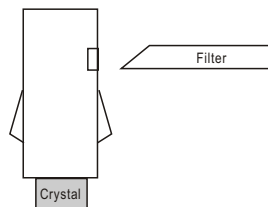
2.2 put the handle holder on machine by screw.then connect well the handle in back of machine.



2.2 put the water to Input,when water is out of overflow means the water tank is full



2.3 Put the filter in handle

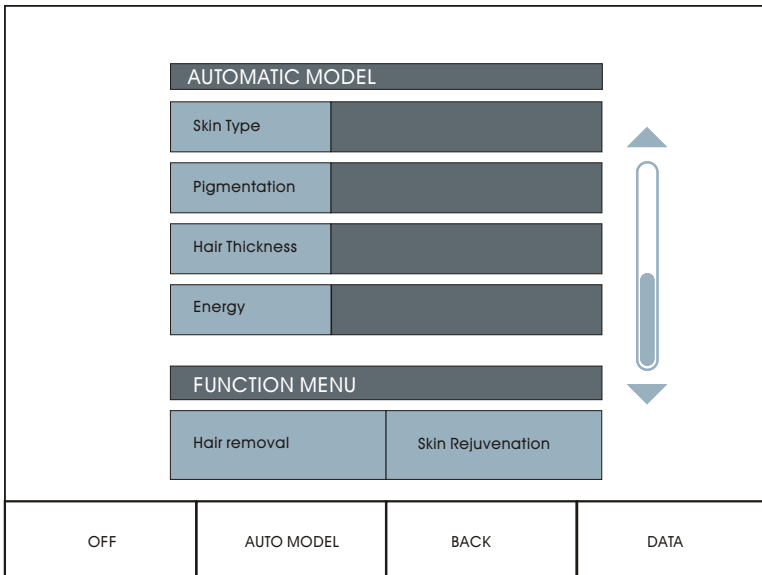


# HKS811B

Intense Pulse Light  
User & Training Manual

## 3. Operate the Device

### 3.1 Auto interface



Skin Type: I - II White Skin    III IV Dark Skin

Pigmentation: None    Light    Medium    Intense

Hair Thickness: Thin    Medium    Thick



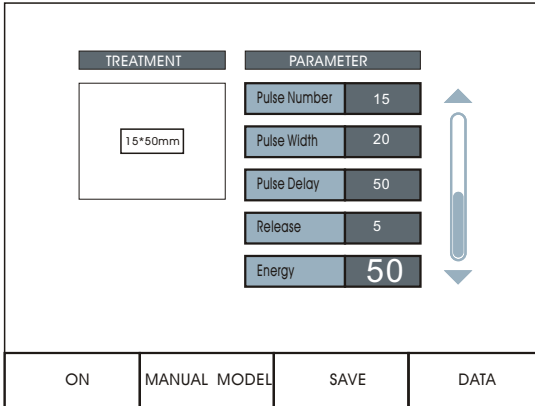
# HKS811B

## Intense Pulse Light

### User&Training Manual

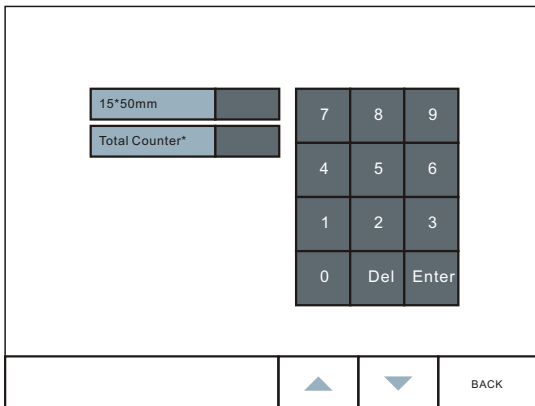
## 3. Operate the Device

### 3.2 Manual interface



Save: Save the parameter for current  
 Release: time for each shot distance

### 3.3 Data interface



15\*50mm: current shot account, press it will be 0  
 total counter: all shot account, need input password for 0

# HKS811B

Intense Pulse Light  
User&Training Manual

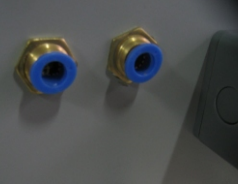
---

## 3. Operate the Device

---

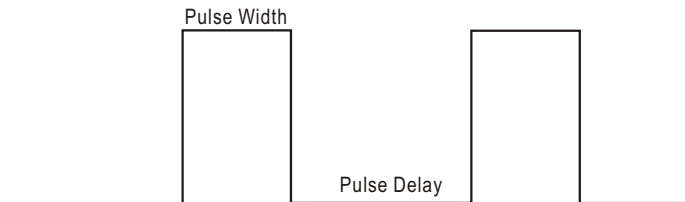
### 3.3 Operating&setting

Before turn on machine,  
must take out the water  
Plug from machine back.



Choice one model language in Screen. The system will enter Auto model. In Auto model, the system have memory right parameter for many treatment. Only need chice right Skin type, Pigment, Hair thickness, then press the READY, the Machine can start to work. Manual model, User can input right parameter to fix sufferer treatment. Choice different filter to make different treatment. User Data show the current shot amount and total amount.

Delete total shot amount need password.



### 3.4 Finish the treatment.

Frist need press the ON in screen, make the lamp off. Then turn off the key switch+urgency button+main electric switch. Do not let the lamp be light when the user leave for long time.

# HKS811B

**Intense Pulse Light**  
User & Training Manual

## 4. Treatment Parameter

Dark hair by lower width

Light hair by higher width

thickness hair by higher delay and lower energy

thin hair by lower delay and higher energy

dark skin by higher delay and lower energy

light skin by lower delay and high energy

When add the width that can not reduce the energy

when reduce the width that can not add the energy

SKIN TYPE	A	I - II
	B	III - IV
PIGMENTATION	1	none
	2	light
	3	medium
	4	intense
HAIR THICKNESS	C	thin
	D	medium
	E	thick

Skin rejuvenation				
	Pulse Number	Pulse Width	Pulse Delay	Energy
A1	1	9.7	0	28
A2	1	9.2	0	27
A3	1	8.8	0	26
A4	1	8.4	0	25
B1	2	9.2	10	26
B2	2	8.8	10	25
B3	2	8.4	15	24
B4	2	8.2	15	23

# HKS811B

## Intense Pulse Light

### User&Training Manual

#### 4.Treatment Parameter

Hair Removal				
	Pulse Number	Pulse Width	Pulse Delay	Energy
A1C	1	9.5	0	36
A1D	1	8.5	0	35
A1E	1	7.5	0	33
A2C	1	8.5	0	34
A2D	1	7.5	0	33
A2E	1	6.5	0	32
A3C	2	7.5	10	32
A3D	2	6.5	10	31
A3E	2	6	10	30
A4C	3	7	15	30
A4D	3	6	15	29
A4E	3	5.5	15	28
B1C	3	9	5	35
B1D	3	8	5	34
B1E	3	7	5	33
B2C	3	8.5	10	33
B2D	3	7.5	10	32
B2E	3	6.5	10	31
B3C	3	7.5	15	31
B3D	3	6.5	15	30
B3E	3	5.5	15	29
B4C	5	6.5	17	29
B4D	5	6	17	28
B4E	5	5.5	17	27

# HKS811B

Intense Pulse Light  
User&Training Manual

---

## 5.Treatment Procedure

---

5.1 Shave the hair on skin and left hair be 1-2mm.



5.2 Put the Gel on skin,Gel Thickness is around 1mm.



5.3 Touch well the crystal on skin.



5.4 After treatment,clean the Skin by warm water.

---

---

## 6.IPL Treatment General Knowledge

---

### 6.1.Curative effect

After first one or two treatment,the hair can lost 80%.

After 4-5 treatment,the hair will lost 95%.then no hair grow or less thin hair grow.(Acceptable)

### 6.2.treatment Caution And the principle

For treatment is that the patient should feel little Acceptable pain.Keep the skin be cool.

**Never shot to eyes**

### 6.3. Taboos

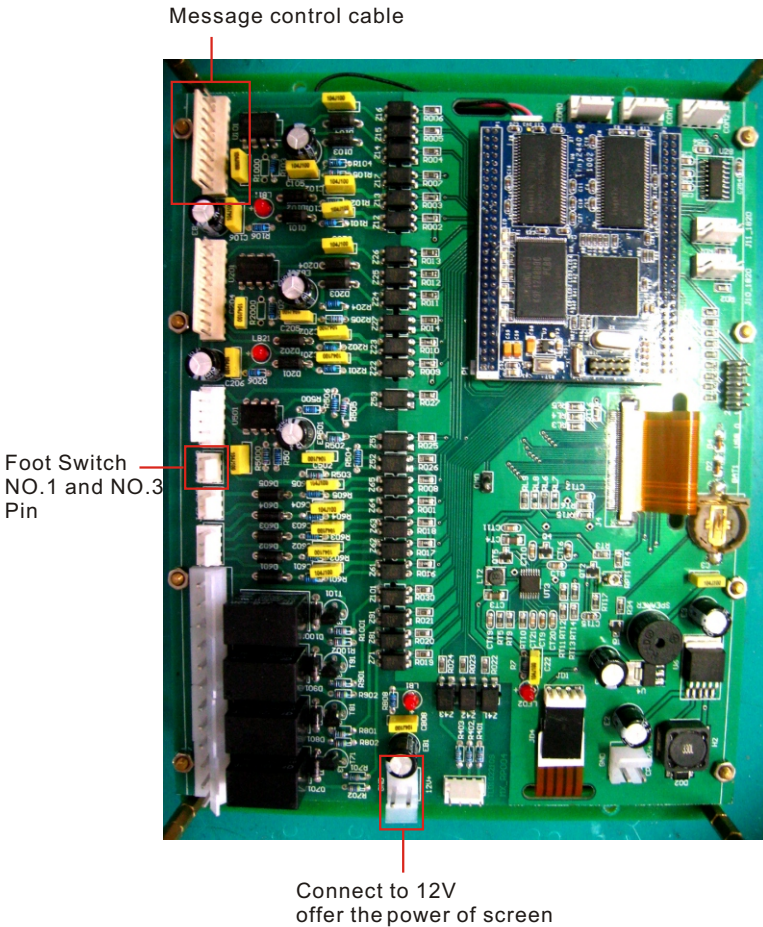
- a.To avoid using the machine on the abdomen of the pregnant women or women in menses
- b.To avoid using the machine on around the parts under which metal,plastic or silicon wee buried.
- c.To avoid using the machine on around the medical and electric instrument,such as the hearing aid,heart starter, mechanical heart,etc.
- d.To avoid using the machine on the epileptic and those in bad health
- e.To avoid using the machine on the wound around the treatment area and the areas with metals inside of the body.
- f.To avoid using the machine on people who has high blood pressure or diabetes or serious skin diseases or heart diseases, or who is sensitive to electric current,or who is reveiving hormone treatment.

# HKS811B

Intense Pulse Light  
User&Training Manual

## 7.Service

### 7.1.Screen

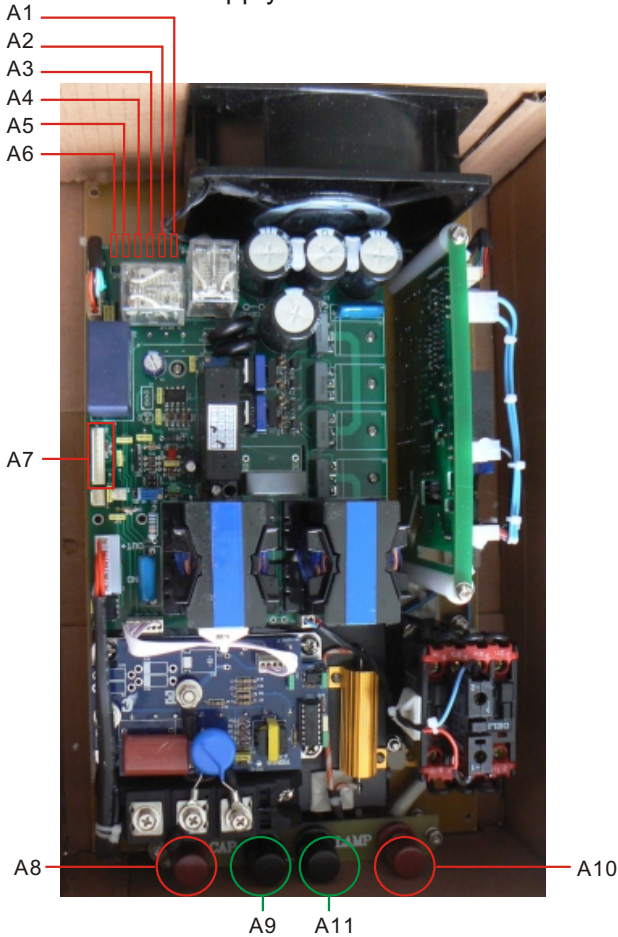


# HKS811B

Intense Pulse Light  
User&Training Manual

## 7.Service

### 7.2.IPL Power Supply



A1A2 to KeySwitch and Urgent Button.

A3A4 220V or 110V AC in.

A5A6 220V or 110V AC out to 12V Power box.

A7 Message control to Screen board

A8 to CAP+,A9 to CAP-,A10 to lamp+,A11 to Lamp-

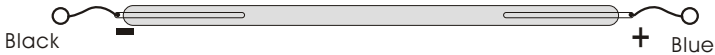
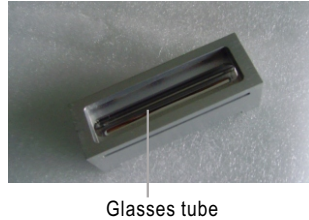
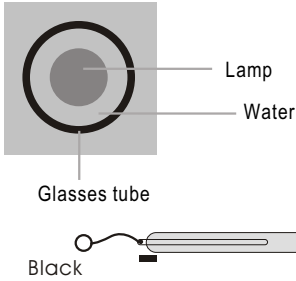


# HKS811B

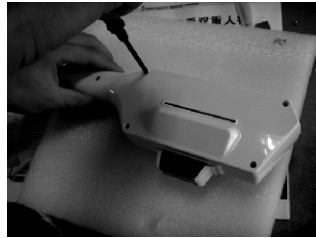
Intense Pulse Light  
User&Training Manual

## 7.Service

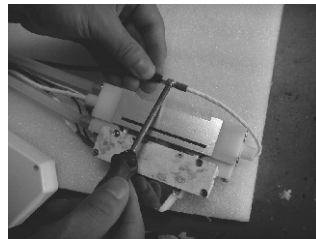
### 7.3.Change Lamp



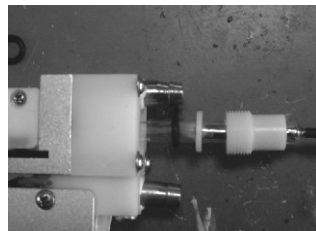
#### 7.3.1.Disconnect the panel of handle



7.3.2.take out the screw of the wire connection of lamp  
(The insulating tape,protecting electricity leakage)



7.3.3.Screw off these two plastic caps.  
Take care inside tuber airproof ring,  
Draw out the break lamp from inside.



7.3.4.Put the new lamp inside,do not break  
each side cable of lamp.(Very important)

# HKS811B

Intense Pulse Light  
User&Training Manual

---

## 8.Our IPL Device superiority

---

6.1.Whole ABS Plastic Mould.

6.2.Automatic program for treatment,the hair and skin data is from Europe and USA famous clinical.

6.3.Super cooling system for reduce pain.

6.4.It does not present any contagious risk.

6.5.Maximum security for the client, default programs

6.6.Super treatment effect

**We Are Looking for Sale agent over the world.**

